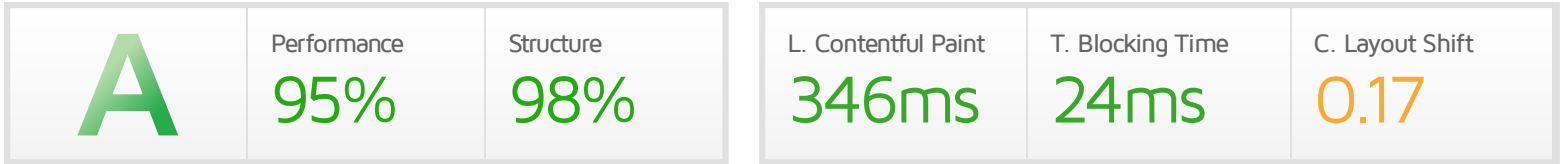




# Performance Report for: <https://daoismwayoflife.org/>

Report generated: Fri, Feb 17, 2023 5:02 PM +0000  
 Test Server Location: London, UK  
 Using: Chrome (Desktop) 103.0.5060.134, Lighthouse 9.6.4



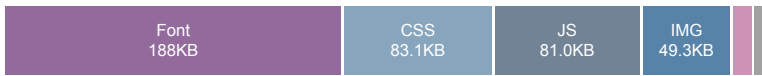
## Top Issues

| IMPACT  | AUDIT   |                            |
|---------|---|----------------------------|
| Med-Low | <b>Use a Content Delivery Network (CDN)</b>                       | 10 resources found         |
| Med-Low | <b>Serve static assets with an efficient cache policy</b>         | Potential savings of 111KB |
| Low     | <b>Avoid large layout shifts</b> <small>CLS</small>               | 5 elements found           |
| Low     | <b>Eliminate render-blocking resources</b> <small>FCP LCP</small> | Potential savings of 19ms  |
| Low     | <b>Avoid enormous network payloads</b> <small>LCP</small>         | Total size was 417KB       |

## Page Details



Total Page Size - 417KB



Total Page Requests - 30



■ HTML 
 ■ JS 
 ■ CSS 
 ■ IMG 
 ■ Video 
 ■ Font 
 ■ Other

### How does this affect me?

Today's web user expects a fast and seamless website experience. Delivering that fast experience can result in increased visits, conversions and overall happiness.

As if you didn't need more incentive, **Google has announced that they are using page speed in their ranking algorithm.**

### About GTmetrix

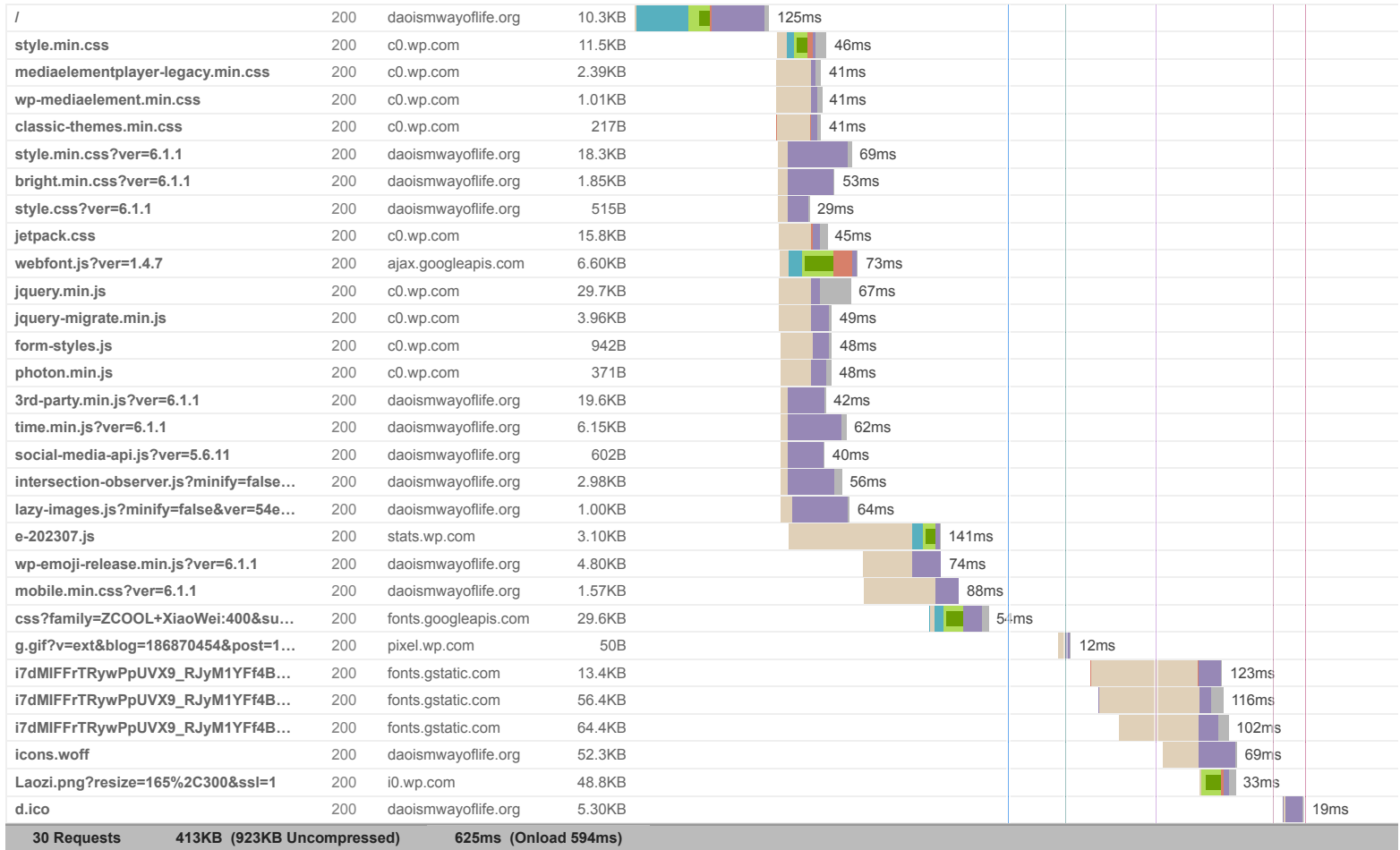


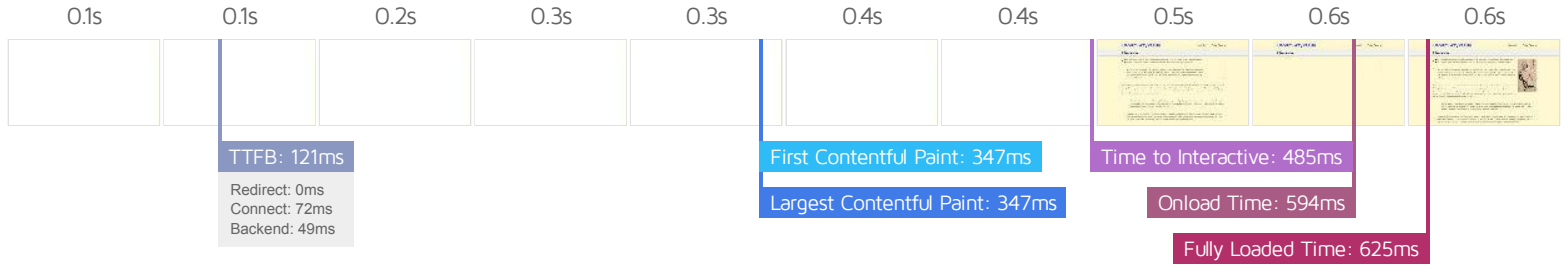
GTmetrix is developed by the good folks at Carbon60, a Canadian hosting company with over 27 years experience in web technology.

<https://carbon60.com/>

The waterfall chart displays the loading behaviour of your site in your selected browser. It can be used to discover simple issues such as 404's or more complex issues such as external resources blocking page rendering.

Daoism Way of Life – There is another world out there





### Performance Metrics

|  |  |   |  |
|--|--|---|--|
| <p><b>First Contentful Paint</b></p> <p>How quickly content like text or images are painted onto your page. A good user experience is 0.9s or less.</p>                                    | <p>Good - Nothing to do here</p> <p><b>346ms</b></p> | <p><b>Time to Interactive</b></p> <p>How long it takes for your page to become fully interactive. A good user experience is 2.5s or less.</p>           | <p>Good - Nothing to do here</p> <p><b>485ms</b></p> |
| <p><b>Speed Index</b></p> <p>How quickly the contents of your page are visibly populated. A good user experience is 1.3s or less.</p>  | <p>Good - Nothing to do here</p> <p><b>472ms</b></p> | <p><b>Total Blocking Time</b></p> <p>How much time is blocked by scripts during your page loading process. A good user experience is 150ms or less.</p> | <p>Good - Nothing to do here</p> <p><b>24ms</b></p>  |
| <p><b>Largest Contentful Paint</b></p> <p>How long it takes for the largest element of content (e.g. a hero image) to be painted on your page. A good user experience is 1.2s or less.</p> | <p>Good - Nothing to do here</p> <p><b>346ms</b></p> | <p><b>Cumulative Layout Shift</b></p> <p>How much your page's layout shifts as it loads. A good user experience is a score of 0.1 or less.</p>          | <p>More than recommended</p> <p><b>0.17</b></p>      |

### Browser Timings

|            |       |             |       |              |       |
|------------|-------|-------------|-------|--------------|-------|
| Redirect   | 0ms   | Connect     | 72ms  | Backend      | 49ms  |
| TTFB       | 121ms | First Paint | 347ms | DOM Int.     | 393ms |
| DOM Loaded | 401ms | Onload      | 594ms | Fully Loaded | 625ms |

| IMPACT  | AUDIT  |  |
|---------|--|--|
| Med-Low | <b>Use a Content Delivery Network (CDN)</b>  | 10 resources found                               |
| Med-Low | <b>Serve static assets with an efficient cache policy</b>                                | Potential savings of 111KB                       |
| Low     | <b>Avoid large layout shifts</b> <span>CLS</span>  | 5 elements found                                 |
| Low     | <b>Eliminate render-blocking resources</b> <span>FCP</span> <span>LCP</span>             | Potential savings of 19ms                        |
| Low     | <b>Avoid enormous network payloads</b> <span>LCP</span>                                  | Total size was 417KB                             |
| Low     | <b>Ensure text remains visible during webfont load</b> <span>FCP</span> <span>LCP</span> | 4 fonts found                                    |
| Low     | <b>Avoid long main-thread tasks</b> <span>TBT</span>                                     | 3 long tasks found                               |
| Low     | <b>Reduce JavaScript execution time</b> <span>TBT</span>                                 | 109ms spent executing JavaScript                 |
| Low     | <b>Reduce unused CSS</b> <span>FCP</span> <span>LCP</span>                               | Potential savings of 74.1KB                      |
| Low     | <b>Reduce initial server response time</b> <span>FCP</span> <span>LCP</span>             | Root document took 48ms                          |
| Low     | <b>Minify CSS</b> <span>FCP</span> <span>LCP</span>                                      | Potential savings of 3.31KB                      |
| Low     | <b>Avoid chaining critical requests</b> <span>FCP</span> <span>LCP</span>                | 20 chains found                                  |
| N/A     | <b>Avoid an excessive DOM size</b> <span>TBT</span>                                      | 113 elements                                     |
| N/A     | <b>Largest Contentful Paint element</b> <span>LCP</span>                                 | 1 element found                                  |
| N/A     | <b>Minimize main-thread work</b> <span>TBT</span>  | Main-thread busy for 468ms                       |
| N/A     | <b>Reduce the impact of third-party code</b> <span>TBT</span>                            | Third-party code blocked the main thread for 4ms |
| N/A     | <b>User Timing marks and measures</b>  |  |