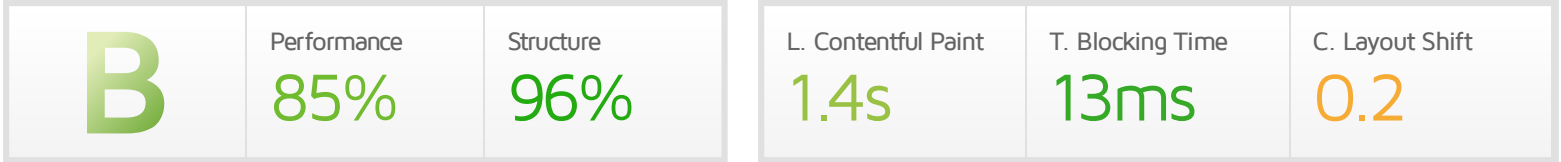




Performance Report for: <https://letthepeoplesing.org/>

Report generated: Tue, Aug 22, 2023 7:54 PM +0100
 Test Server Location: Vancouver, Canada
 Using: Chrome (Desktop) 103.0.5060.134, Lighthouse 9.6.4



Top Issues

IMPACT	AUDIT	
High	Reduce initial server response time <small>FCP LCP</small>	Root document took 1.0s
Med-Low	Lazy load third-party resources with facades <small>TBT</small>	1 facade alternative available
Med-Low	Avoid large layout shifts <small>CLS</small>	1 element found
Low	Serve static assets with an efficient cache policy	Potential savings of 36.3KB
Low	Ensure text remains visible during webfont load <small>FCP LCP</small>	1 font found

Page Details



Total Page Size - 657KB



Total Page Requests - 28



■ HTML
 ■ JS
 ■ CSS
 ■ IMG
 ■ Video
 ■ Font
 ■ Other

How does this affect me?

Today's web user expects a fast and seamless website experience. Delivering that fast experience can result in increased visits, conversions and overall happiness.

As if you didn't need more incentive, **Google has announced that they are using page speed in their ranking algorithm.**

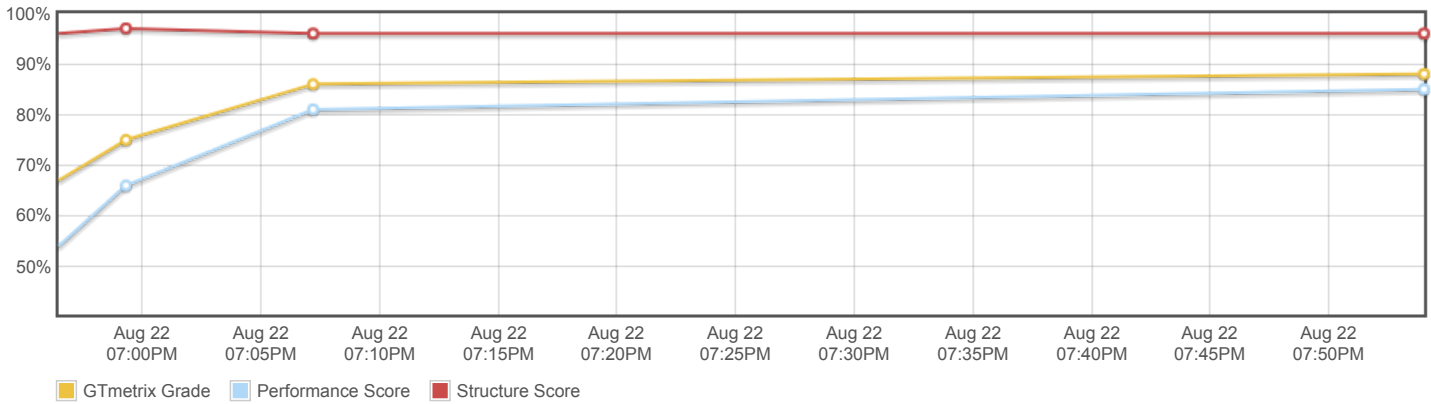
About GTmetrix



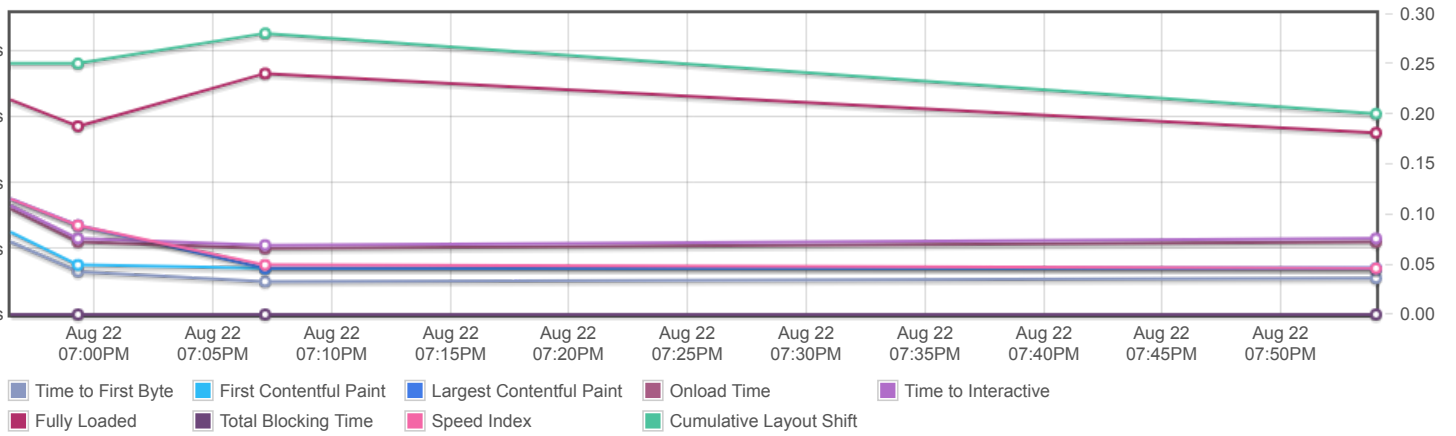
GTmetrix is developed by the good folks at Carbon60, a Canadian hosting company with over 27 years experience in web technology.

<https://carbon60.com/>

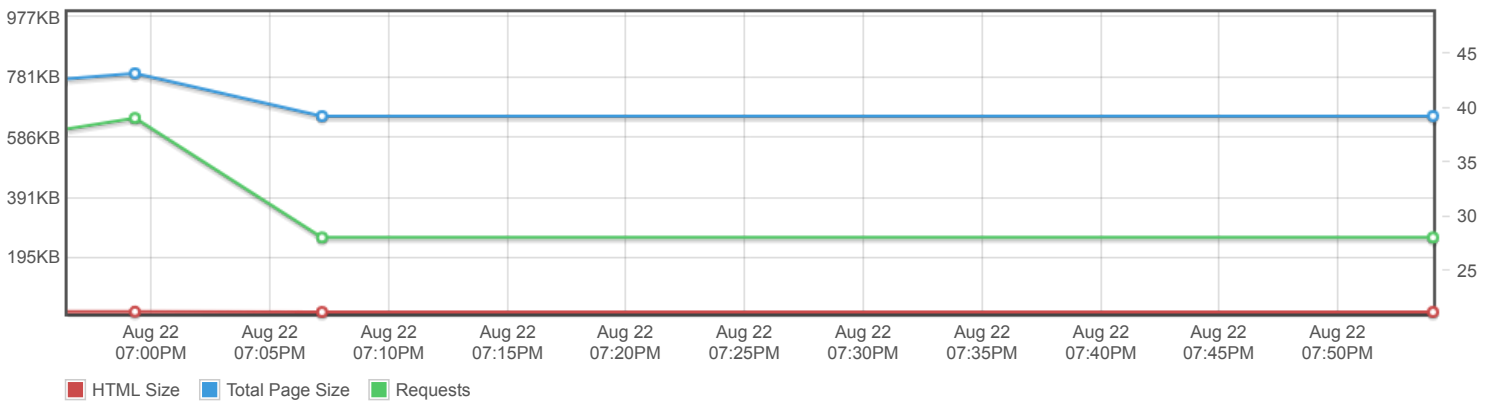
Page scores



Page metrics

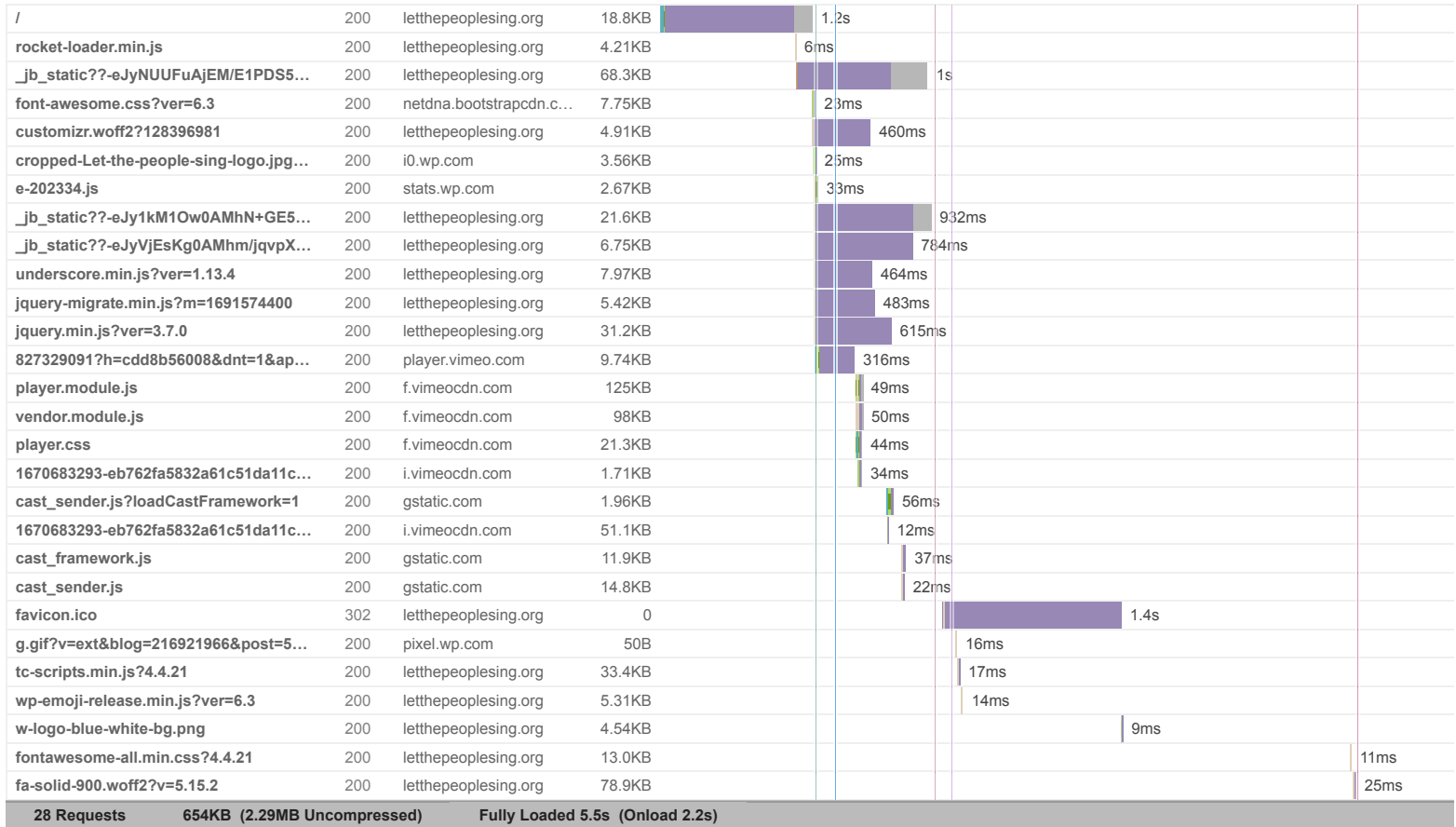


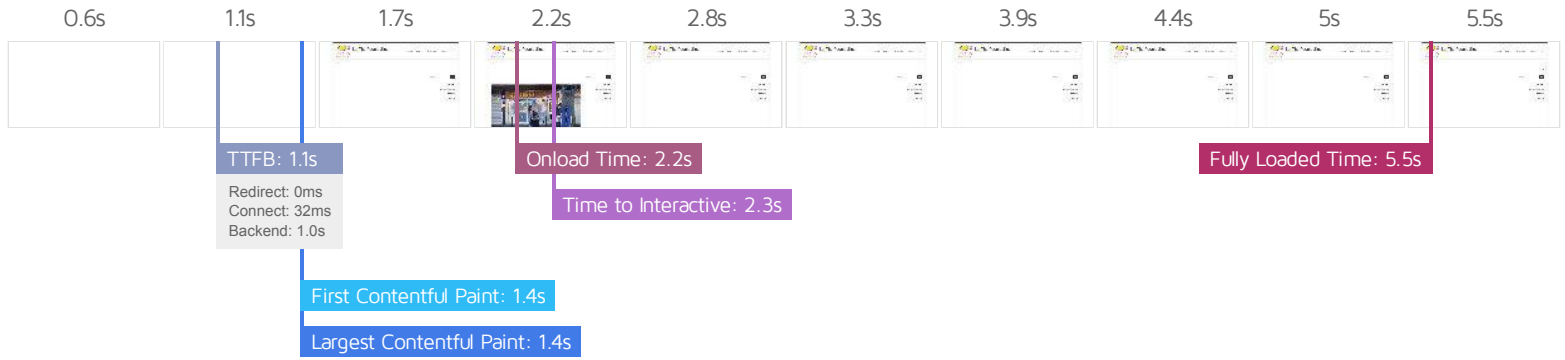
Page sizes and request counts



The waterfall chart displays the loading behaviour of your site in your selected browser. It can be used to discover simple issues such as 404's or more complex issues such as external resources blocking page rendering.

Home - Let The People Sing





Performance Metrics

<p>First Contentful Paint</p> <p>How quickly content like text or images are painted onto your page. A good user experience is 0.9s or less.</p>	<p>Longer than recommended</p> <p>1.4s</p>	<p>Time to Interactive</p> <p>How long it takes for your page to become fully interactive. A good user experience is 2.5s or less.</p>	<p>Good - Nothing to do here</p> <p>2.3s</p>
<p>Speed Index</p> <p>How quickly the contents of your page are visibly populated. A good user experience is 1.3s or less.</p>	<p>OK, but consider improvement</p> <p>1.4s</p>	<p>Total Blocking Time</p> <p>How much time is blocked by scripts during your page loading process. A good user experience is 150ms or less.</p>	<p>Good - Nothing to do here</p> <p>13ms</p>
<p>Largest Contentful Paint</p> <p>How long it takes for the largest element of content (e.g. a hero image) to be painted on your page. A good user experience is 1.2s or less.</p>	<p>OK, but consider improvement</p> <p>1.4s</p>	<p>Cumulative Layout Shift</p> <p>How much your page's layout shifts as it loads. A good user experience is a score of 0.1 or less.</p>	<p>More than recommended</p> <p>0.2</p>

Browser Timings

Redirect	0ms	Connect	32ms	Backend	1.0s
TTFB	1.1s	DOM Int.	1.2s	DOM Loaded	1.2s
First Paint	1.4s	Onload	2.2s	Fully Loaded	5.5s

IMPACT	AUDIT	
High	Reduce initial server response time <small>FCP LCP</small>	Root document took 1.0s
Med-Low	Lazy load third-party resources with facades <small>TBT</small>	1 facade alternative available
Med-Low	Avoid large layout shifts <small>CLS</small>	1 element found
Low	Serve static assets with an efficient cache policy	Potential savings of 36.3KB
Low	Ensure text remains visible during webfont load <small>FCP LCP</small>	1 font found
Low	Avoid long main-thread tasks <small>TBT</small>	3 long tasks found
Low	Reduce unused CSS <small>FCP LCP</small>	Potential savings of 76.7KB
Low	Avoid enormous network payloads <small>LCP</small>	Total size was 657KB
Low	Reduce JavaScript execution time <small>TBT</small>	67ms spent executing JavaScript
Low	Avoid serving legacy JavaScript to modern browsers <small>TBT</small>	Potential savings of 8.06KB
Low	Avoid non-composited animations <small>CLS</small>	5 animated elements found
Low	Minify JavaScript <small>FCP LCP</small>	Potential savings of 4.76KB
Low	Avoid chaining critical requests <small>FCP LCP</small>	1 chain found
Low	Reduce unused JavaScript <small>LCP</small>	Potential savings of 21.0KB
N/A	Avoid an excessive DOM size <small>TBT</small>	248 elements
N/A	Largest Contentful Paint element <small>LCP</small>	1 element found
N/A	Minimize main-thread work <small>TBT</small>	Main-thread busy for 705ms
N/A	Reduce the impact of third-party code <small>TBT</small>	Total size was 353KB
N/A	User Timing marks and measures	